

**AMETEK**<sup>®</sup>

**MicroPoise**<sup>®</sup>  
MEASUREMENT SYSTEMS



## Aftermarket Products & **Services**

Committed to Maximizing the Return on Your Investment

- ▶ Global Support & Services
- ▶ Parts & Tooling
- ▶ Machine Modernization & Rebuilding
- ▶ Training & Services

**PERFORMANCE SERVICES**  
**AMECARE**

For more than 90 years, Micro-Poise has been supplying innovative solutions that put us on the leading edge of final finish tire testing and tire & wheel assembly technology. Contact us today to see why The World is Turning to Micro-Poise for all final finish tire testing and tire & wheel assembly needs.

Micro-Poise Measurement Systems serves the tire and automotive industries with the most complete line of uniformity machines, dynamic balancers, geometry measurement systems, and X-Ray equipment. To protect and maintain your investment, Micro-Poise has established a global Aftermarket Products and Services network that is unsurpassed in the industry.

#### Responsive to **Customer Needs**

Manufacturers need more than just a service supplier. They need a highly trained, Service Solution Provider. Look to Micro-Poise to minimize maintenance downtime and institute preventive service programs.

- ▶ Start-Up and Testing Services
- ▶ Training Program and Services
- ▶ Preventive/Predictive Maintenance Programs
- ▶ Global Repair Services
- ▶ Spare Parts and Precision Tooling
- ▶ Machine Modernization and Rebuilding Program
- ▶ Consulting and Optimization Services
- ▶ 24-Hour Call Center

With our responsive and knowledgeable Aftermarket Products and Services group, we ensure that our customers receive the highest quality replacement products, services and technical support. You need the most highly trained and experienced staff in the market today.

Your service needs are a priority at Micro-Poise. We are dedicated to adding value to your operations by creating unique partnerships that provide customized solutions. Understanding the dynamics of your operations enables our team to make a positive difference.

#### Complete **Aftermarket Product and Services Portfolio**

Who better to support your needs than the original equipment manufacturer? Whether you operate Akron Standard®, Micro-Poise®, TGIS-SL®, Collmann™ or any other brand of measurement equipment, the Aftermarket Product and Services group will exceed your expectations for cost savings, performance and reliability.



## Our **Pledge of Commitment**

Each team member of Aftermarket Products and Services has made a pledge to make a positive difference in your operations. By focusing on serving the needs of our customers after the sale, our relationships will be strengthened and innovative services can be developed for the future.

#### Exceptional Customer Service Pledge

It is a critical element required to add value to our customer's business.

We are a global customer service provider, partnering with our customers to meet their on-going uptime, quality and reliability goals.

Our dedicated and professional team provides world class support and solutions.

Call Toll Free at: +1-800-428-3812 (US)  
or +1-330-541-9100  
[www.micropoise.com](http://www.micropoise.com)



## Spare Parts and Precision Tooling

Micro-Poise carries an extensive inventory of critical spare parts to ensure that your up-time and delivery goals are achieved.

- ▶ Global Inventory
- ▶ Original spare parts supplied by Micro-Poise are delivered quickly and reliably – often overnight
- ▶ Our team can be reached 24-hours a day, 7-days a week via our Call Center telephone line at 1-800-428-3812 (US) or +1-330-541-9100
- ▶ We can assist with:
  - ▶ Ordering parts with our user-friendly order processing system
  - ▶ Maximize up-time by providing comprehensive spare part lists for all machines
  - ▶ Committed inventory programs based on your maintenance requirements

Micro-Poise offers a variety of precision tooling options based on your machine and product range.

- ▶ Tooling specialists will assist you in finding proper tooling for your application with superior results
  - ▶ Metallurgical recommendation based on environment
  - ▶ Extremely tight tolerances to make our tooling the “Best in Market” – better repeatability and more accurate readings
  - ▶ Exceptional manufacturing and engineering services to provide tooling for all ranges of Micro-Poise and other brands of Balance and Uniformity tire evaluation centers



AkroLUBE II

## Products of Focus

As part of the Spare Parts and Tooling Services, we offer products and services to meet all of your needs.

- ▶ Loadwheels
- ▶ Precision Rims
- ▶ Calibration Master Assembly
- ▶ Precision Adapters
- ▶ Multi-Jaw Tooling
- ▶ AkroLUBE II Tire Bead Lubricant
- ▶ Replacement Belts and Drums
- ▶ Wool Sleeve Replacement
- ▶ Tire Testing Services
- ▶ X-Ray Tubes and Detectors
- ▶ Power Splicer



Tooling Cleaner

Marking Ink



Marking Foil

## Machine Modernization

You've made a significant investment in your final finish department to guarantee the best quality to your customer. Our goal is to help you protect and maximize the return on this investment. Machine Modernization Solutions can be implemented through Upgrade Kits installed in your plant or as part of an off-site Machine Rebuild.

### Cycle Time Reduction

- ▶ Modern Drives and Controls
- ▶ Hydraulic Upgrades
- ▶ Machine Optimization Tuning

### Process Automation

- ▶ Bar Code Reading for Data Traceability and Automatic Machine Set-up
- ▶ Automatic Adjustable Width Chuck
- ▶ Automated Rim Change

### Increased Machine Utilization

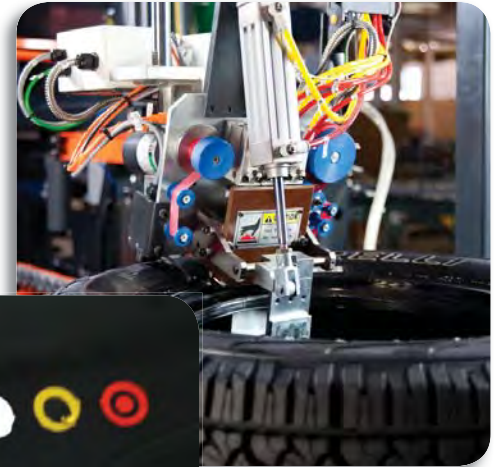
- ▶ Conveyor Upgrades to Process a Wider Range of Tires
- ▶ Tire Grinding to Increase Production Yield
- ▶ AkroMARK PLUS for up to 256 Marking Combinations

### New Measurement Capability

- ▶ TGIS-SL for Complete Geometry Inspection
- ▶ Reference Results to a Specific Point of Construction – "Tire Spotting"
- ▶ X-Ray Automatic Defect Recognition Software
- ▶ Data Visualization Tools

### Obsolescence Protection

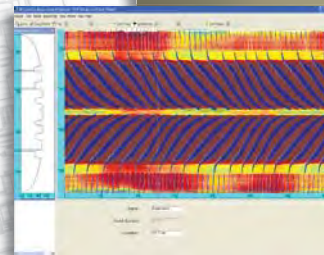
- ▶ New Machine Controllers
- ▶ X-Ray Detectors
- ▶ Component Upgrade Path



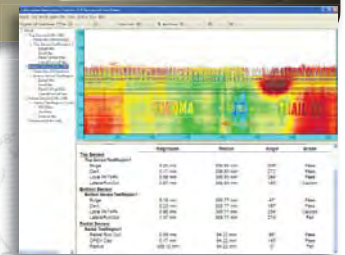
Hot Stamp Marking



Typical Marks



Tread View







Automatic Rim Changer

## Upgrade Kits

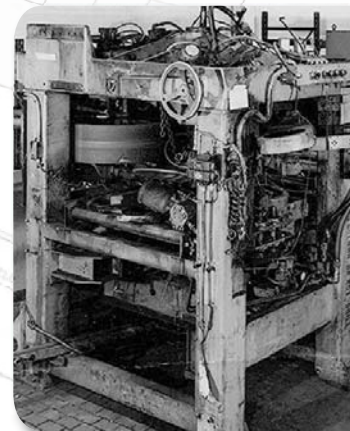
Machine Modernization Upgrade Kits can be implemented in a time phased sequence. Key benefits of these in-plant upgrades include:

- ▶ Introducing advancements in technology
- ▶ Budgetary flexibility
- ▶ Adapting installation to meet project schedules
- ▶ Maintaining a common machine platform
- ▶ Utilizing existing plant maintenance and operational expertise

## Machine Rebuild Program

Rebuilding an existing machine allows you to modernize and extend the life of your initial investment. Your machine will be rebuilt in a Micro-Poise facility utilizing the skilled machinery specialists and engineers of the original manufacturer. Key benefits of a complete rebuild include:

- ▶ Maintaining a footprint compatible with the existing plant layout
- ▶ Minimizing disruption to existing plant operations
- ▶ Thorough inspection of frame and all critical components
- ▶ Painting to comply with plant color standards
- ▶ Comprehensive testing to ensure reliability and conformance with performance expectations



Before Rebuild

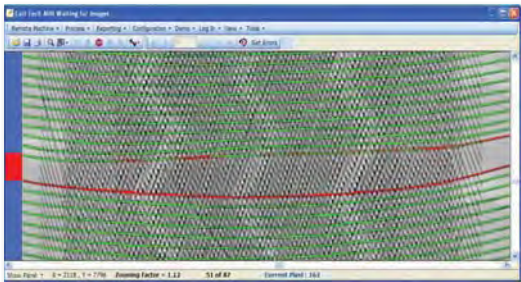
## Modernization Solutions

Designed to support our major product lines

- ▶ Micro-Poise Dynamic Balance Machines – AkroDYNE®, AIT-238, ATW and VTW
- ▶ Akron Standard® Uniformity Machines – ASTEC®, D70, D90 and FD90
- ▶ Geometry Measurement Systems – TGIS-SL® can be implemented on all Dynamic Balance, Tire Uniformity and Collmann Measuring Systems
- ▶ Collmann X-Ray Systems



After Rebuild



X-RAY Automatic Defect Recognition

Micro-Poise provides a full complement of parts and services for the Collmann brand of high precision X-Ray test and measurement equipment. All Micro-Poise part stocking locations maintain stock for critical X-Ray machinery components. Upgrades for all Collmann X-Ray equipment and third party X-Ray machinery are available.

This includes the COLL-TECH X-RAY Automatic Defect Recognition (ADR) Product, the industry's standard for real time X-Ray analysis and defect recognition. COLL-TECH X-RAY ADR is offered exclusively through Micro-Poise.

## Installation and Commissioning **Services**

Expediting the machine start-up process and expert employee training are keys to maximizing your machinery investment.

- ▶ We install and commission upon delivery to your facility
- ▶ Once commissioned, our Field Service Team will thoroughly train your employees on proper operation and maintenance guidelines for maximized performance and reliability of results in the shortest amount of time
- ▶ We develop the training criteria to specifically meet each customer's unique production requirements

For more information on our complete Aftermarket Products and Services, please visit our website at [www.micropoise.com](http://www.micropoise.com) or call one of our global locations for a customer service representative at +1-800-428-3812 (US) or +1-330-541-9100.

## Tire Testing **Services**

Do you have excess tires that require testing? Do you have a tire testing project but lack available machine capacity? Do you have a tire quality issue or a tire recall that requires Uniformity, Balance or Geometry testing?

Micro-Poise can assist you in your final finish testing needs by providing independent tire testing services. By testing tires at our controlled facility in Streetsboro, Ohio, USA, you can avoid a costly bottleneck at your production plant. Overseas shipping costs may also be avoided by having these tests performed at our location.

- ▶ Tire Uniformity Testing
- ▶ Geometry Inspection – bulge, depression, lateral and radial runout
- ▶ Dynamic Balance Testing – static and couple imbalance



## Training Programs and **Services**

As part of the commitment to our customer base, continuing training services are offered at your facility for hands-on, real world instruction.

- ▶ Conducted by experienced Micro-Poise professionals, on-site training courses are available and range from 1-5 days for completion
- ▶ These insightful classes are an invaluable tool to maintaining the performance levels of your equipment
- ▶ Training can also be arranged at our Micro-Poise Headquarters in Streetsboro, Ohio, USA or any of our training centers







## Consulting and Optimization **Services**

Often times, our customers require on-site consulting or evaluation services to determine the best technical solution to optimize your equipment's performance.

- ▶ Specialized technicians and engineers can provide invaluable feedback with our hands-on approach
- ▶ Development of manufacturing solutions and site surveys reduce critical downtime
- ▶ We suggest strategies for existing equipment, new equipment or production improvements
- ▶ Cycle time optimization
- ▶ Complete evaluation of current and future needs

## 24-Hour **Call Center**

By calling our 24-Hour Call Center at +1-800-428-3812 (US) or +1-330-541-9100, customers can receive support and information for the following areas:

- ▶ Purchase parts
- ▶ Technical support
- ▶ Customer service

Contact your local sales representative or visit our website for additional information on these areas:

- ▶ Retrofit and machine rebuilding
- ▶ Order entry
- ▶ Training classes and scheduling

## Extended Service **Program**

Fully trained Micro-Poise service technicians are available for extended work at your facility. Through this program, you can schedule additional resources directly from Micro-Poise to support critical maintenance, shutdown and startup assistance, or retooling requirements for your manufacturing facility.




## Global Repair **Services**

Micro-Poise has more than 40 service specialists world-wide to fulfill your repair service needs.

- ▶ On-call Technical Service Desk support for over-the-phone diagnostics and consultation
- ▶ Fast on-site technician visits to your facility for expert repair service reduces critical downtime
- ▶ Responsive and knowledgeable network of repair technicians repair all makes/models of uniformity machines, dynamic balancers, geometry measurement systems and X-Ray Equipment
- ▶ Original Equipment Manufacturer experience allows us to quickly and effectively repair your equipment in the fastest time possible

## Globally Positioned to Serve **You**

Micro-Poise Measurement Systems LLC serves the tire and automotive industry all over the world.

-  Micro-Poise Headquarters
-  Corporate Offices, Stocking Locations and Services
-  Sales Representatives



**AMETEK**<sup>®</sup> **MicroPoise**<sup>®</sup>  
MEASUREMENT SYSTEMS

Micro-Poise Measurement Systems  
USA  
555 Mondial Parkway  
Streetsboro, OH  
USA 44241-4510  
Telephone: +1-330-541-9100  
Fax: +1-330-541-9111  
Website: [www.micropoise.com](http://www.micropoise.com)

MicroPoise Measurement Systems  
Europe GmbH  
Moislinger Allee 224  
23558 Lübeck  
Germany  
Telephone: +49 451 89096 0  
Fax: +49 451 89096 24

Micro-Poise Industrial Equipment Co.  
Beijing  
Rising International Industrial Park  
#1 Building, No. 29 Jinghai 3rd Road BDA  
Beijing 100023, China  
Telephone: +86-10-67892171/72/73  
Fax: +86-10-67892239

Micro-Poise Measurement Systems  
India  
306, Delta wing, 3rd Floor  
Raheja Towers,  
177, Anna Salai,  
Chennai-600002, India  
Telephone: +91 44 4959-1000  
Fax: +91 44 4959-1021

Micro-Poise Measurement Systems  
Korea  
309, 3rd Floor, Gyeonggi R&DB Center  
906-5, Iui-dong, Yeongtong-gu,  
Suwon-city, Gyeonggi-do, 443-270, Korea  
Telephone: +82-31-888-5259  
Fax: +82-31-888-5228

Micro-Poise Measurement Systems  
Guangzhou  
Rm. 1410-1412, Yian Plaza  
33 Jian She Liu Ma Road  
Guangzhou 510060, China  
Telephone: +86-20-8384-0122  
Fax: +86-20-8384-0123